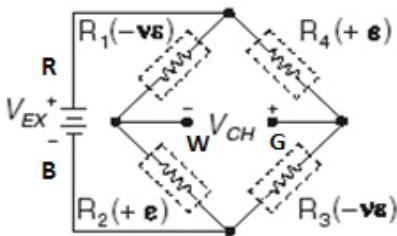
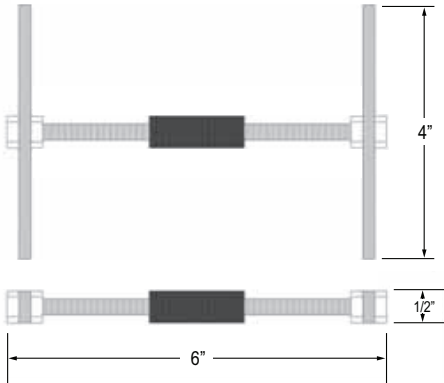


# Dynamic Asphalt Strain Gages

Dynamic Asphalt Strain Gages (ASG/VASG) - measure axial strain in flexible pavement under high frequency (dynamic) conditions. These low modulus, ruggedized sensors are built to withstand the high temperature and vibratory rolled compaction required for asphalt placement.

Utilizing four active elements of a Wheatstone Bridge circuit, this gage is easily adaptable to most data acquisition systems. Each sensor is individually calibrated with high temperature resistant lead wire attached and is provided with QC documentation and Calibration plots.



## SPECIFICATIONS:

### BRIDGE CIRCUIT

Four active 350-ohm strain gages

### RANGE

±3000 microstrain

### SENSITIVITY AT 1000 ME

~ 1.3 mV<sub>out</sub>/V<sub>exc</sub>

### EXCITATION

up to 5 Volts

### TEMPERATURE RANGE

-34°C to 200°C

### LEAD WIRE

30 AWG, twisted four-wire with shielding

## For More Information Contact:

Tom Weinmann, Vice President and  
Practice Area Leader - Structural Monitoring  
1390 Busch Parkway t 224.676.1371  
Buffalo Grove, IL 60089  
tweinmann@geocomp.com

