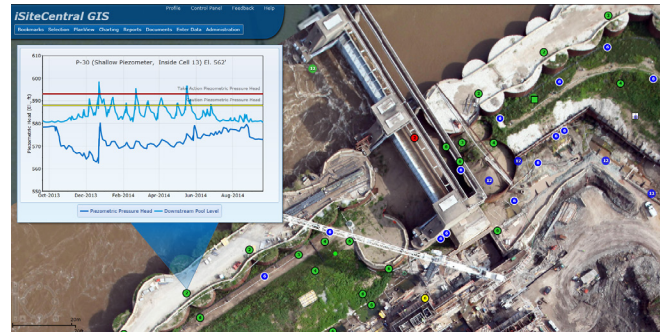
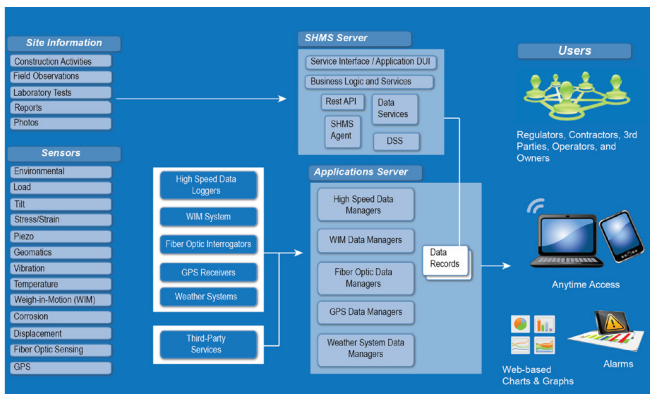


# iSiteCentral®

Sensor to Screen®

iSiteCentral® provides valuable structural performance data from sensors and information which inform owners of the impacts that everyday **operations, maintenance, repair and replacement** have on structural health.

Real-time changes can be tracked with **automated alerts** by setting up warning and **serviceability limits** on data. iSiteCentral® provides insight that can be integrated into maintenance and structural management systems to ultimately increase the quality and cost effectiveness of decisions for asset management.



## Key benefits:

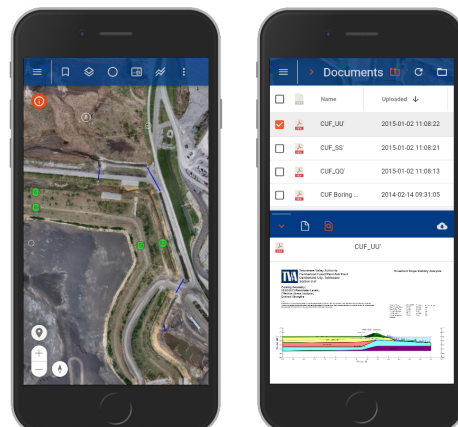
- Access actionable performance data from your project with any Internet enabled device quickly and efficiently
- Store and retrieve large quantities of data and related information reliably and quickly
- Real-time alerts of measurements that exceed alert levels
- Supported by a team knowledgeable and experienced in all aspects of performance instrumentation and monitoring and structural engineering
- Automated report generation for management and compliance.

Automated Alerts, Real-Time Data, Informative Reports & Analysis

Geographic information system (GIS) interface, accessible 24/7

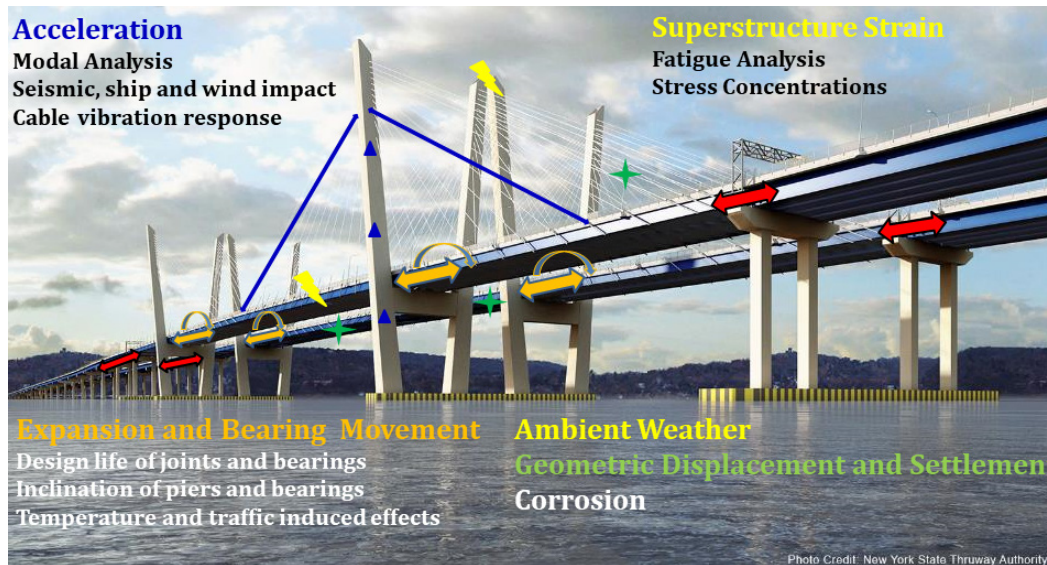
Warnings of movement, stress, vibrations, noise, and deterioration in structural performance during construction & operation

iSiteCentral® makes it easy for you to review and communicate key performance information to help stakeholders make informed decisions about public safety, risk management, operations, maintenance, and resource management.



# PERFORMANCE MONITORING

iSiteCentral® has been successfully utilized on hundreds of critical infrastructure projects including bridges, tunnels, dams, levees, pipelines, transit systems, coal ash facilities, river locks, buildings and more. Geocomp designs, installs, automates, operates, upgrades, maintains and advises on automated performance monitoring systems for most any geotechnical and structural instrumentation or data management application. Geocomp's team of engineers have a wealth of knowledge that can be leveraged on your project from geotechnical, to SHM, to testing. To see example projects, visit [geocomp.com](http://geocomp.com).



Better Data → Better Decisions



125 Nagog Park  
Acton, MA 01720 U.S.A.  
Phone: (978) 635-0012 (Geocomp)  
Phone: (978) 635-0424 (GeoTesting Express)

