

Unconfined Compression Mini LoadTrac III

Benefits and Features

- 11 kN (2,500 lbs.) load capacity and 50 mm (2.0 in.) travel
- Total automation of data collection and reporting of test results
- Prepare tables and plots of report quality within minutes of completing a test
- Generate columns of data for easy reduction using your own spreadsheet software
- Ability to access and control the unit over a computer network using Geo-Net option

Applicable Test Standards

- ASTM D2166 / AASHTO T208 Unconfined Compression Testing of Soils
- ASTM D1663 Compressive Strength of Molded Soil-Cement Cylinders

The Mini LoadTrac III load frame provides compression/extension testing for a number of geotechnical tests that must have accurate control of the rate of displacement during loading. With accessories, the unit can perform unconfined compression, and triaxial shear phase testing.

The base unit includes a stepper motor, lead screw, vertical tension rods and crosshead, displacement transducer, electronic controls and network communications. Versions of the unit are available to test loads up to 11 kN (2,500 lbs.). Displacement rates can be set to any value between 0.00003 and 15 mm per minutes (0.000001 to 0.6 inches per minute).

The base unit can run in stand-alone mode without a computer. It includes built-in data acquisition and display capability. Sensor readings are displayed in S1 or English units and stored in memory.

Optional software running in Windows® completely automates the test, reducing the data and preparing test results.



*Standard Fully Automated
Unconfined Compression System*

Unconfined Compression Mini LoadTrac III

TECHNICAL SPECIFICATIONS

MOTOR

Stepper motor with built-in controls

TRAVEL

External displacement transducer with 50 mm (2 in.) range and 0.0013 mm (0.00005 in.) resolution

DISPLACEMENT

Control from 0.00003 to 15 mm per minute (0.000001 to 0.6 in. per minute)

POWER

110/220 V, 50/60 Hz, 1 phase

DIMENSIONS

464 x 546 x 1206 mm
(18 x 21.5 x 47.5 inches)

WEIGHT

55 kg (120 lbs.)

ACCESSORIES

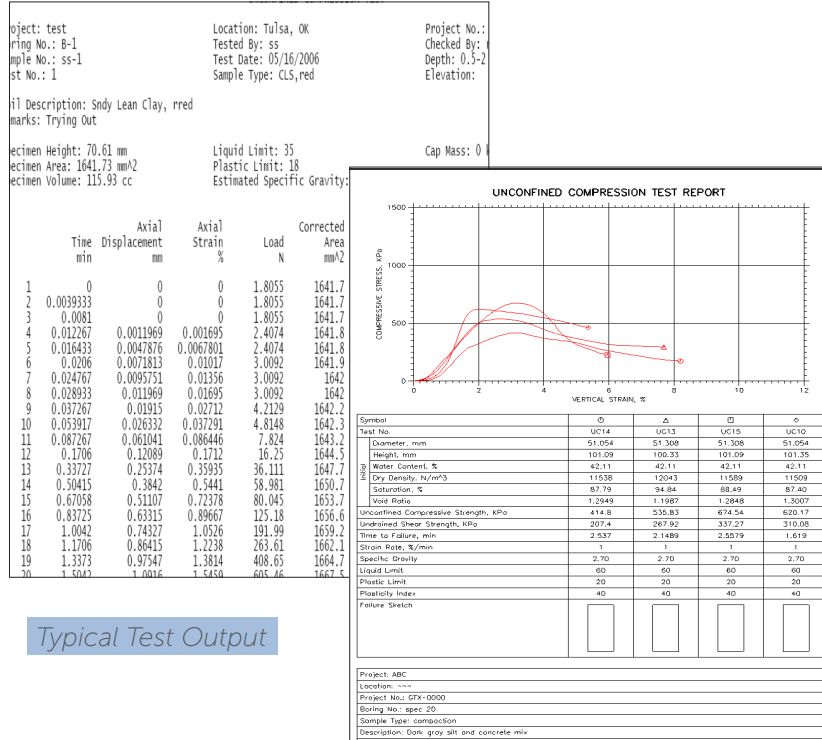
7020: 75 mm (3.0 in.) platen with load cell adaptor

Geo-NET™: Network / communication card and cable to link load frame to PC

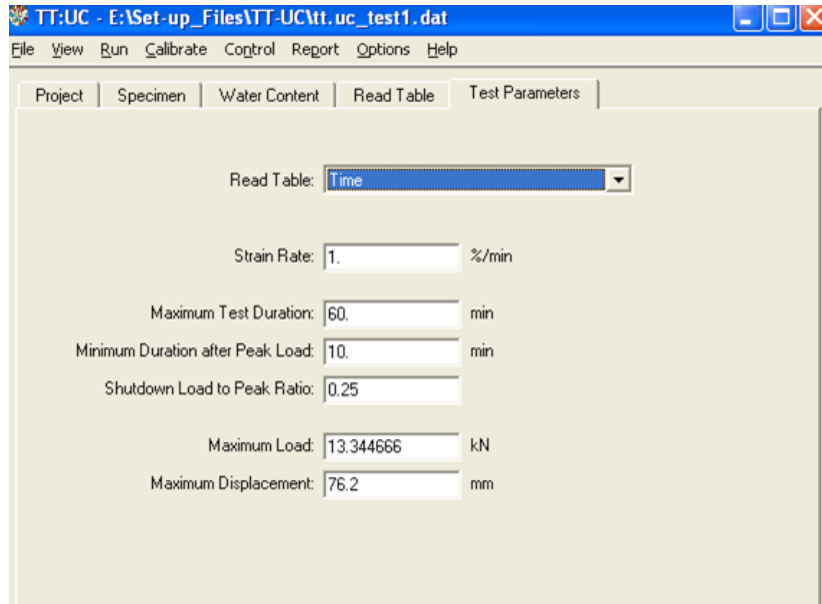
UC: Software package to automatically run and report UC tests

OPTIONS

UC Report: Editing / reporting software for multiple tests



Typical Test Output



User-friendly Interface